

Mobile Source Transit Security System (MSTS) Overview



Erika Hunsicker
Office of Radiological Security



Global
Material
Security



ORS

Office of Radiological Security
Protect • Remove • Reduce

Office of Radiological Security

- Mission: ORS enhances global security by preventing high activity radioactive materials from use in acts of terrorism.

PROTECT

PROTECT radioactive sources used for vital medical, research, and commercial purposes



REMOVE

REMOVE and dispose of disused radioactive sources



REDUCE

REDUCE the global reliance on radioactive sources through replacement with viable non-isotopic alternative technologies



Mobile Radioactive Source Risks and Threats

Worldwide 10,000
commercial mobile
sources in use

Portability increases
the vulnerability of
devices during trans-
port and field use

Number of
"incidents" involving
mobile sources since
2012 (RadTrax)



Mobile Radioactive Source Risk

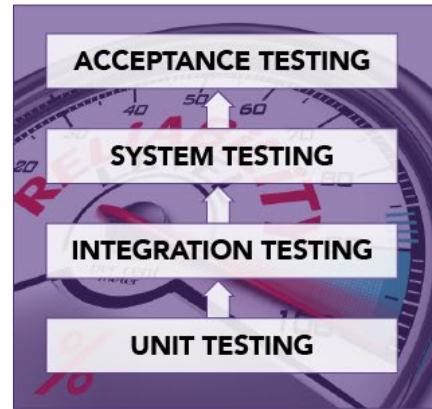
Developing an Effective Solution

**Enhanced Security
of Device**

Cost Effective

Reliable & Robust

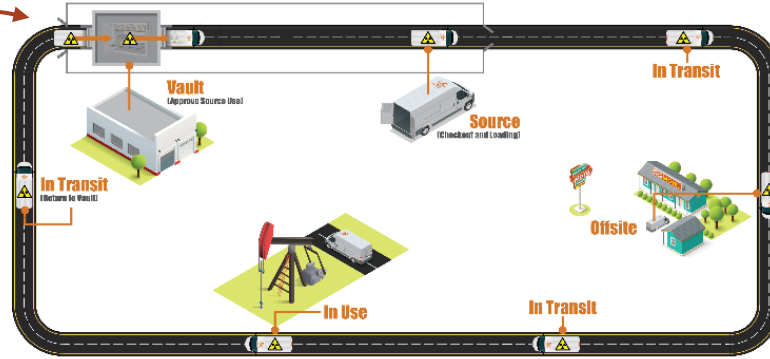
**Alert/Alarm
Communication**



Characteristics of an Effective Solution

Reducing The Risk With Technology

Traditional Security Practices



Additional Mobile Source Monitoring

Job Cycle



Improved Security



Enhanced Situational Awareness



Real-Time Event Monitoring



INDUSTRIAL RADIOGRAPHY



WELL LOGGING

Mobile Source Transit Security (MSTS) Solutions

- » Industrial Radiography MSTS Technologies | IR-MSTS
- » Well Logging MSTS Technologies | WL-MSTS

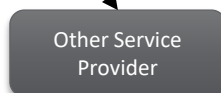
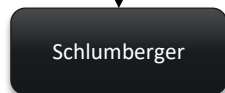
Mobile Source Transit Security Solutions



Well Logging



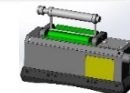
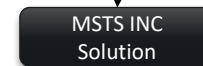
Industry driven MSTs solution



Industrial Radiography



Device specific MSTs solution



Industrial Radiography

Source Security



Source Security

Improved Security
Enhanced Situational Awareness
Real-Time Event Monitoring



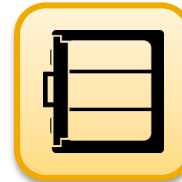
Industrial Radiography

Source Security



Camera | Persistent Monitoring Tag

Track the Camera
Monitor the Source



Storage | Integrated Site Security

Secure the Camera(s)
Monitor the Camera(s)



Truck | Secure Transport Box

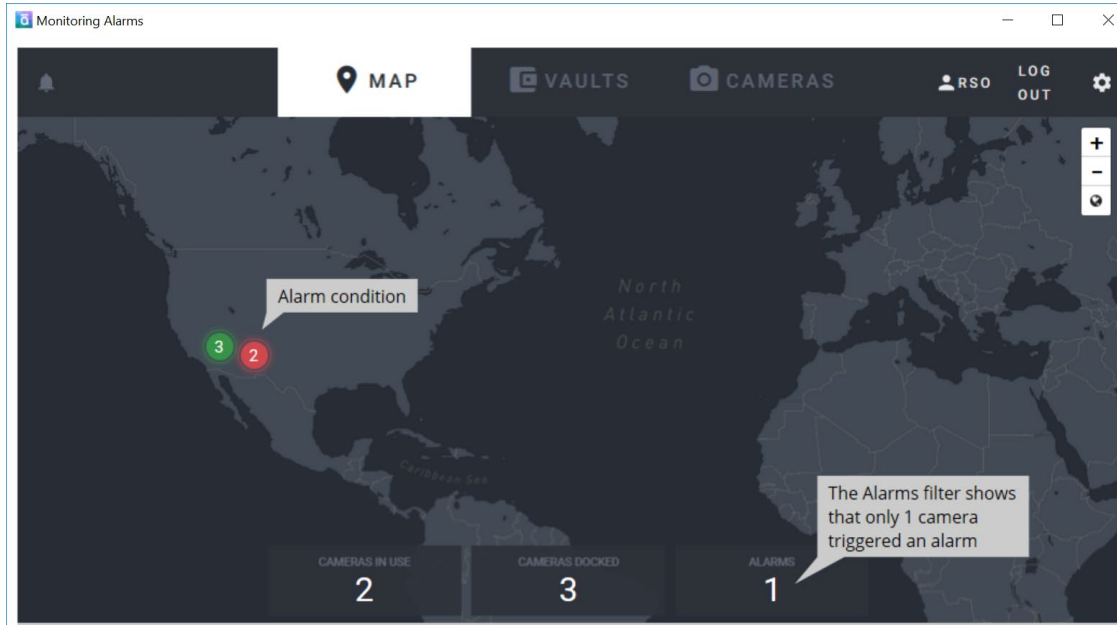
Track the Truck
Monitor the Camera



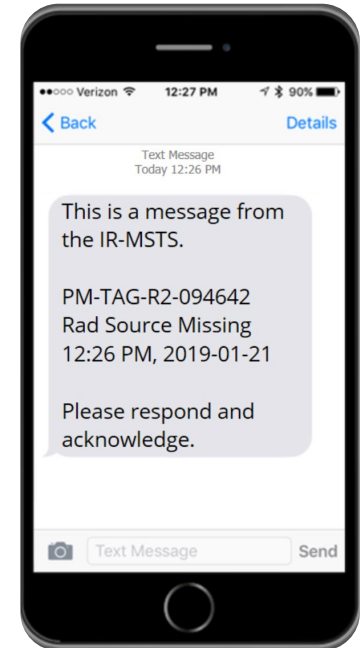
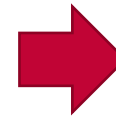
Notifications and Alarms

Receive Wireless Comms
Alert Users

IR-MSTS Alarm



IR-MSTS alarm condition



Text and email sent to user

Well Logging Source Security



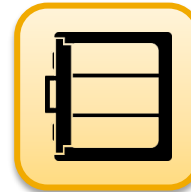
Source Security

Improved Security
Enhanced Situational Awareness
Real-Time Event Monitoring



Shield | eTag(s)

Track the Shield
Monitor the Shield Proximity



Vault | Homebase Security System

Monitor the Shields(s)
Local Alarm Connections



Truck | MCU and rTag

Track the Truck
Monitor the Shield Proximity
Monitor Source Levels



Notifications and Alarms

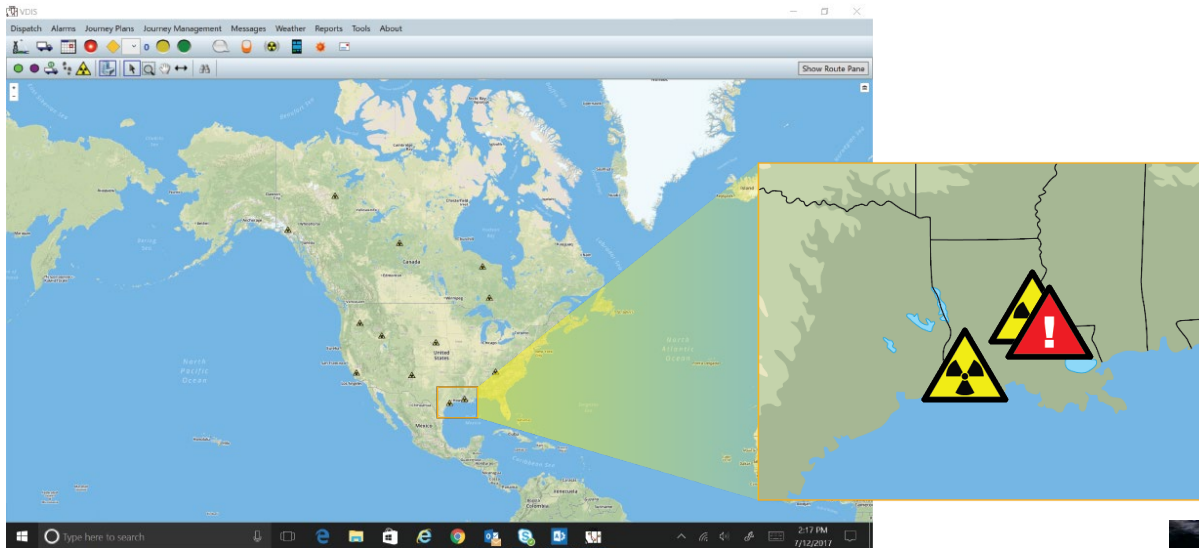
Receive Wireless Comms
Alert Users



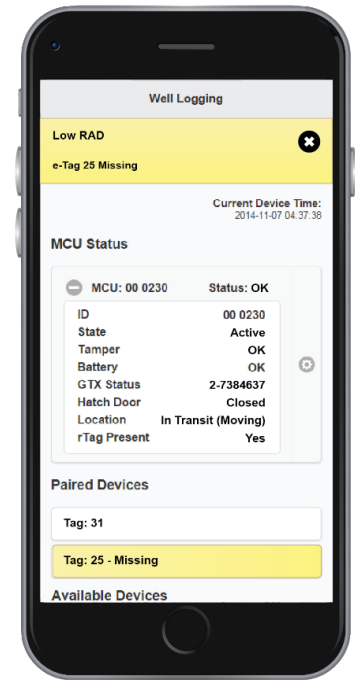
Overpack | MCU, rTag, and eTag(s)

Track the Shield(s)
Monitor Source Levels

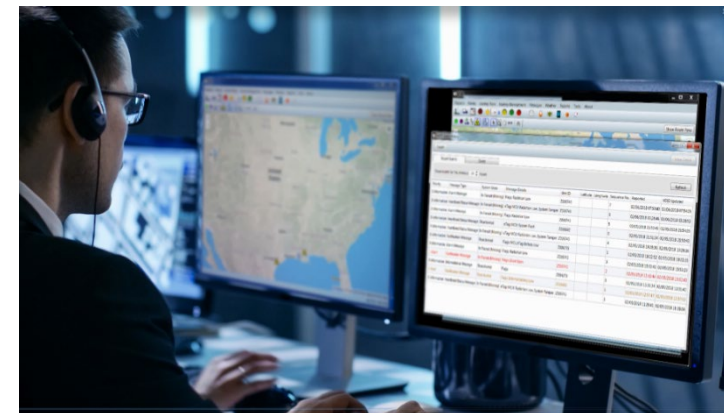
WL-MSTS Alarm



WL-MSTS alarm condition



Local alarm sent to device



24hr alarm monitoring

Summary

- Mobile sources and their use create unique technological, operational, and security challenges.
- Mobile sources continue to be at risk of loss or theft.
- The MSTS solution improves security of mobile sources through enhanced situational awareness.
- Industry adoption of MSTS will reduce likelihood of this material ending up in the wrong hands and used for malicious intent.